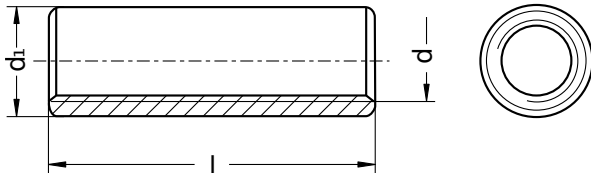


B 50400

Long nuts

Round

Steel | zinc-plated | Cr(VI)-free | Metric thread



Diameter (d)	d ₁ nominal size	Pitch (P)
M6	10	1.00
M8	11	1.25
M10	13	1.50
M12	15	1.75
M20	28	2.50

Length (l) nominal size
20
25

Length (l) nominal size
30
40
50

Diameter (d)	Length (l)				
	20	25	30	40	50
M6	●		●		
M8		●	●		
M10			●	●	
M12			●	●	
M20					●

• Combinations available in the eShop | Other sizes on request

All technical data refer to the measure mm

