

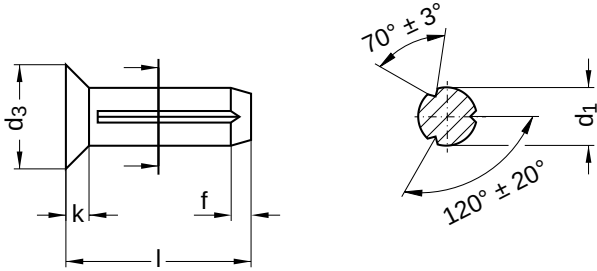
**DIN 1477** similar to ISO 8747

# Countersunk head grooved pins

Countersunk head

Steel | bright | Cr(VI)-free

Further information: DIN standard has been withdrawn



Diameter (d)	d <sub>1</sub>		d <sub>3</sub>			f	k		
	min.	max.	nominal size	min.	max.		nominal size	min.	max.
1.4	1.35	1.4	2.5	2.30	2.70	0.50	0.7	0.60	0.80
1.6	1.55	1.6	2.8	2.60	3.00	0.50	0.8	0.70	0.90
2	1.95	2.0	3.5	3.30	3.70	0.50	1.0	0.90	1.10
2.5	2.42	2.5	4.4	4.20	4.60	0.70	1.2	1.10	1.30
3	2.92	3.0	5.2	4.95	5.45	1.00	1.4	1.30	1.50
4	3.90	4.0	7	6.75	7.25	1.15	2.0	1.85	2.15
5	4.90	5.0	8.8	8.50	9.10	1.15	2.5	2.35	2.65
6	5.90	6.0	10.5	10.20	10.80	2.00	3.0	2.85	3.15

nominal size	Length (l)	
	min.	max.
3	2.80	3.20
4	3.76	4.24
5	4.76	5.24
6	5.76	6.24
7	6.71	7.29
8	7.71	8.29
10	9.71	10.29
12	11.65	12.35

nominal size	Length (l)	
	min.	max.
15	14.65	15.35
18	17.65	18.35
20	19.58	20.42
22	21.58	22.42
25	24.58	25.42
28	27.58	28.42
30	29.58	30.42

All technical data refer to the measure mm



**DIN 1477** similar to ISO 8747

# Countersunk head grooved pins

Countersunk head

Steel | bright | Cr(VI)-free

Diameter (d)	Length (l)														
	3	4	5	6	7	8	10	12	15	18	20	22	25	28	30
1.4	●	●	●												
1.6	●	●	●	●	●										
2		●	●	●	●	●	●								
2.5		●	●	●	●	●	●								
3			●	●	●	●	●	●	●						
4				●	●	●	●	●	●	●	●				
5						●	●	●	●	●	●	●	●		
6							●	●	●	●	●	●	●	●	●

• Combinations available in the eShop | Other sizes on request

All technical data refer to the measure mm

