

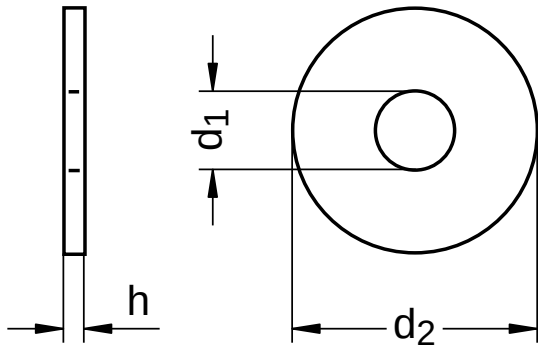
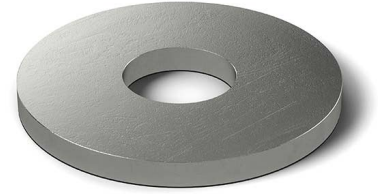
**DIN 9021** similar to ISO 7093

## Washers

With large outside diameter

Stainless steel A2 | Cr(VI)-free

Further information: DIN standard has been withdrawn



Diameter (d)	d <sub>1</sub>		d <sub>2</sub>		h		
	min.	max.	min.	max.	nominal size	min.	max.
2.7	2.7	2.84	7.64	8	0.8	0.7	0.9
3.2	3.2	3.38	8.64	9	0.8	0.7	0.9
3.7	3.7	3.88	10.57	11	0.8	0.7	0.9
4.3	4.3	4.48	11.57	12	1.0	0.9	1.1
5.3	5.3	5.48	14.57	15	1.2	1.0	1.4
6.4	6.4	6.62	17.57	18	1.6	1.4	1.8
7.4	7.4	7.62	21.48	22	2.0	1.8	2.2
8.4	8.4	8.62	23.48	24	2.0	1.8	2.2
10.5	10.5	10.77	29.48	30	2.5	2.3	2.7
13	13.0	13.27	36.38	37	3.0	2.7	3.3
15	15.0	15.27	43.38	44	3.0	2.7	3.3
17	17.0	17.27	49.38	50	3.0	2.7	3.3

All technical data refer to the measure mm

