

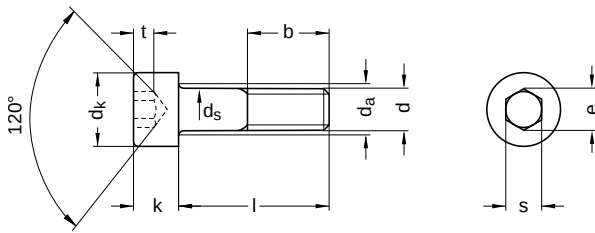
DIN 912 similar to ISO 4762

Cylinder screws

Hexagon socket

Steel 10.9 | zinc-plated | Cr(VI)-free | Metric thread

Further information: DIN-standard has been withdrawn | changed nominal lengths | the fine thread has been transferred to ISO 12474



Diameter (d)	b nominal size	da max.	dk		ds		k		e min.	s			Pitch (P)	t min.	Tool size
			min.	max.	min.	max.	min.	max.		nominal size	min.	max.			
M3	18	3.6	5.32	5.5	2.86	3	2.86	3	2.87	2.5	2.52	2.58	0.50	1.3	SW 2,5
M4	20	4.7	6.78	7.0	3.82	4	3.82	4	3.44	3.0	3.02	3.08	0.70	2.0	SW 3
M5	22	5.7	8.28	8.5	4.82	5	4.82	5	4.58	4.0	4.02	4.10	0.80	2.5	SW 4
M6	24	6.8	9.78	10.0	5.82	6	5.70	6	5.72	5.0	5.02	5.14	1.00	3.0	SW 5
M8	28	9.2	12.73	13.0	7.78	8	7.64	8	6.86	6.0	6.02	6.14	1.25	4.0	SW 6
M10	32	11.2	15.73	16.0	9.78	10	9.64	10	9.15	8.0	8.02	8.18	1.50	5.0	SW 8
M12	36	13.7	17.73	18.0	11.73	12	11.57	12	11.43	10.0	10.02	10.18	1.75	6.0	SW 10
M14	40	15.7	20.67	21.0	13.73	14	13.57	14	13.72	12.0	12.03	12.21	2.00	7.0	SW 12
M16	44	17.7	23.67	24.0	15.73	16	15.57	16	16.00	14.0	14.03	14.21	2.00	8.0	SW 14
M20	52	22.4	29.67	30.0	19.67	20	19.48	20	19.44	17.0	17.05	17.23	2.50	10.0	SW 17
M24	60	26.4	35.61	36.0	23.67	24	23.48	24	21.73	19.0	19.06	19.28	3.00	12.0	SW 19
M30	72	33.4	44.61	45.0	29.67	30	29.48	30	25.15	22.0	22.06	22.28	3.50	15.5	SW 22
M36	84	39.4	53.54	54.0	35.61	36	35.38	36	30.85	27.0	27.06	27.28	4.00	19.0	SW 27

All technical data refer to the measure mm



DIN 912 similar to ISO 4762

Cylinder screws

Hexagon socket

Steel 10.9 | zinc-plated | Cr(VI)-free | Metric thread

nominal size	Length (l)	
	min.	max.
6	5.76	6.24
8	7.71	8.29
10	9.71	10.29
12	11.65	12.35
14	13.65	14.35
16	15.65	16.35
18	17.65	18.35
20	19.58	20.42
22	21.59	22.42
25	24.58	25.42
30	29.58	30.42
35	34.50	35.50
40	39.50	40.50
45	44.50	45.50
50	49.50	50.50
55	54.40	55.60

nominal size	Length (l)	
	min.	max.
60	59.40	60.60
65	64.40	65.60
70	69.40	70.60
75	74.40	75.60
80	79.40	80.60
85	84.30	85.70
90	89.30	90.70
95	94.30	95.70
100	99.30	100.70
105	104.30	105.70
110	109.30	110.70
115	114.30	115.70
120	119.30	120.70
130	129.20	130.80
140	139.20	140.80
145	144.30	145.70

nominal size	Length (l)	
	min.	max.
150	149.20	150.80
160	159.20	160.80
170	169.20	170.80
180	179.20	180.80
190	189.10	190.90
200	199.10	200.90
210	209.30	210.70
230	229.10	230.90
240	239.10	240.90
250	249.10	250.90
260	258.95	261.05

Diameter (d)	Length (l)																				
	6	8	10	12	14	16	18	20	22	25	30	35	40	45	50	55	60	65	70	75	80
M3		●				●				●	●										
M4	●	●	●	●		●		●		●	●	●	●		●		●				
M5		●	●	●		●	●	●		●	●	●	●	●	●		●		●		
M6		●	●	●		●		●	●	●	●	●	●	●	●	●	●	●	●	●	●
M8				●	●	●		●	●	●	●	●	●	●	●	●	●	●	●	●	●
M10						●		●	●	●	●	●	●	●	●	●	●	●	●	●	●
M12						●		●		●	●	●	●	●	●	●	●	●	●	●	●
M14								●		●	●		●	●	●		●	●	●		●
M16										●	●	●	●	●	●	●	●	●	●	●	●
M20											●	●	●	●	●	●	●	●	●	●	●
M24												●	●		●	●	●		●		●
M30																	●				●
M36																					●

Diameter (d)	Length (l)																					
	85	90	95	100	105	110	115	120	130	140	145	150	160	170	180	190	200	210	230	240	250	260
M3																						
M4																						
M5									●													
M6		●		●		●																
M8	●	●		●	●	●		●		●		●	●	●								
M10	●	●		●		●	●	●	●	●	●	●	●									
M12		●		●	●	●	●	●	●	●	●	●	●	●	●	●		●	●	●		●
M14								●														
M16		●	●	●		●		●	●		●	●	●	●		●	●		●		●	
M20		●		●		●		●		●		●	●	●				●	●			
M24		●		●		●			●		●							●	●			
M30		●		●				●	●													
M36								●														

• Combinations available in the eShop | Other sizes on request



Böllhoff Group · Archimedesstr. 1-4 · 33649 Bielefeld · Phone: +49 521 4482-03 · info@boellhoff.com · eshop.boellhoff.de/en/home

This document was generated automatically. Subject to technical changes and errors. Distribution as well as duplication of this document, its utilisation and communication of its content only permitted with express consent.

All technical data refer to the measure mm