

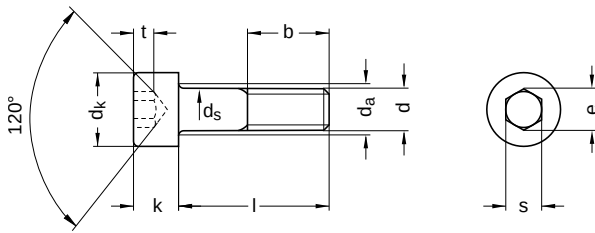
**DIN 912** similar to ISO 4762

## Cylinder screws

Hexagon socket

Steel 12.9 | bright | Cr(VI)-free | Metric thread

Further information: DIN-standard has been withdrawn | changed nominal lengths | the fine thread has been transferred to ISO 12474



Diameter (d)	b nominal size	d <sub>a</sub> max.	d <sub>k</sub>		d <sub>s</sub>		k		e min.	s			Pitch (P)	t min.	Tool size
			min.	max.	min.	max.	min.	max.		nominal size	min.	max.			
M2	16	2.6	3.62	3.8	1.86	2.0	1.86	2.0	1.73	1.5	1.52	1.56	0.40	1.0	SW 1,5
M2.5	17	3.1	4.32	4.5	2.36	2.5	2.36	2.5	2.30	2.0	2.02	2.06	0.45	1.1	SW 2
M3	18	3.6	5.32	5.5	2.86	3.0	2.86	3.0	2.87	2.5	2.52	2.58	0.50	1.3	SW 2,5
M4	20	4.7	6.78	7.0	3.82	4.0	3.82	4.0	3.44	3.0	3.02	3.08	0.70	2.0	SW 3
M5	22	5.7	8.28	8.5	4.82	5.0	4.82	5.0	4.58	4.0	4.02	4.10	0.80	2.5	SW 4
M6	24	6.8	9.78	10.0	5.82	6.0	5.70	6.0	5.72	5.0	5.02	5.14	1.00	3.0	SW 5
M8	28	9.2	12.73	13.0	7.78	8.0	7.64	8.0	6.86	6.0	6.02	6.14	1.25	4.0	SW 6
M10	32	11.2	15.73	16.0	9.78	10.0	9.64	10.0	9.15	8.0	8.02	8.18	1.50	5.0	SW 8
M12	36	13.7	17.73	18.0	11.73	12.0	11.57	12.0	11.43	10.0	10.02	10.18	1.75	6.0	SW 10
M14	40	15.7	20.67	21.0	13.73	14.0	13.57	14.0	13.72	12.0	12.03	12.21	2.00	7.0	SW 12
M16	44	17.7	23.67	24.0	15.73	16.0	15.57	16.0	16.00	14.0	14.03	14.21	2.00	8.0	SW 14
M18	48	20.2	26.67	27.0	17.73	18.0	17.57	18.0	16.00	14.0	14.03	14.21	2.50	9.0	SW 14
M20	52	22.4	29.67	30.0	19.67	20.0	19.48	20.0	19.44	17.0	17.05	17.23	2.50	10.0	SW 17
M24	60	26.4	35.61	36.0	23.67	24.0	23.48	24.0	21.73	19.0	19.06	19.28	3.00	12.0	SW 19
M27	66	30.4	39.61	40.0	26.67	27.0	26.48	27.0	21.73	19.0	19.06	19.28	3.00	13.5	SW 19
M30	72	33.4	44.61	45.0	29.67	30.0	29.48	30.0	25.15	22.0	22.06	22.28	3.50	15.5	SW 22
M36	84	39.4	53.54	54.0	35.61	36.0	35.38	36.0	30.85	27.0	27.06	27.28	4.00	19.0	SW 27
M42	96	45.5	62.54	63.0	41.61	42.0	41.38	42.0	36.57	32.0	32.08	32.33	4.50	24.0	SW 32

All technical data refer to the measure mm



**DIN 912** similar to ISO 4762

## Cylinder screws

Hexagon socket

Steel 12.9 | bright | Cr(VI)-free | Metric thread

nominal size	Length (l)	
	min.	max.
4	3.76	4.24
5	4.76	5.24
6	5.76	6.24
8	7.71	8.29
10	9.71	10.29
12	11.65	12.35
14	13.65	14.35
16	15.65	16.35
18	17.65	18.35
20	19.58	20.42
22	21.58	22.42
25	24.58	25.42
28	27.58	28.42
30	29.58	30.42
35	34.50	35.50
40	39.50	40.50
45	44.50	45.50
50	49.50	50.50
55	54.40	55.60
60	59.40	60.60
65	64.40	65.60
70	69.40	70.60

nominal size	Length (l)	
	min.	max.
75	74.40	75.60
80	79.40	80.60
85	84.30	85.70
90	89.30	90.70
95	94.30	95.70
100	99.30	100.70
105	104.30	105.70
110	109.30	110.70
115	114.30	115.70
120	119.30	120.70
125	124.20	125.80
130	129.20	130.80
135	134.20	135.80
140	139.20	140.80
145	144.20	145.80
150	149.20	150.80
155	154.20	155.80
160	159.20	160.80
165	164.20	165.80
170	169.20	170.80
175	174.20	175.80
180	179.20	180.80

nominal size	Length (l)	
	min.	max.
190	189.10	190.90
200	199.10	200.90
210	209.10	210.90
220	219.10	220.90
230	229.10	230.90
235	234.10	235.90
240	239.10	240.90
250	249.10	250.90
260	258.95	261.05
270	268.95	271.05
280	278.95	281.05
290	288.95	291.05
300	298.95	301.05
310	308.95	311.05
330	328.85	331.15
350	348.85	351.15
360	358.85	361.15

All technical data refer to the measure mm



**DIN 912** similar to ISO 4762

# Cylinder screws

Hexagon socket

Steel 12.9 | bright | Cr(VI)-free | Metric thread

Diameter (d)	Length (l)																														
	4	5	6	8	10	12	14	16	18	20	22	25	28	30	35	40	45	50	55	60	65	70	75	80	85	90	95	100	105	110	
M2	●	●	●	●	●	●		●																							
M2.5		●	●	●	●	●		●		●		●																			
M3	●	●	●	●	●	●	●	●	●	●		●		●	●	●	●	●		●											
M4		●	●	●	●	●	●	●	●	●	●	●		●	●	●	●	●	●	●	●	●	●	●	●	●	●	●	●	●	●
M5			●	●	●	●	●	●	●	●	●	●		●	●	●	●	●	●	●	●	●	●	●	●	●	●	●	●	●	●
M6				●	●	●	●	●	●	●	●	●	●	●	●	●	●	●	●	●	●	●	●	●	●	●	●	●	●	●	●
M8				●	●	●	●	●	●	●	●	●	●	●	●	●	●	●	●	●	●	●	●	●	●	●	●	●	●	●	●
M10					●		●	●	●	●	●	●		●	●	●	●	●	●	●	●	●	●	●	●	●	●	●	●	●	●
M12						●		●	●	●	●	●		●	●	●	●	●	●	●	●	●	●	●	●	●	●	●	●	●	●
M14								●	●	●	●		●	●	●	●	●	●	●	●	●	●	●	●	●	●	●	●	●	●	●
M16									●	●		●	●	●	●	●	●	●	●	●	●	●	●	●	●	●	●	●	●	●	●
M18														●	●	●	●	●	●	●	●	●	●	●	●	●	●	●	●	●	●
M20														●	●	●	●	●	●	●	●	●	●	●	●	●	●	●	●	●	●
M24																		●	●	●	●	●	●	●	●	●	●	●	●	●	●
M27																			●	●	●	●	●	●	●	●	●	●	●	●	●
M30																				●	●		●		●		●		●		●
M36																											●		●		●
M42																												●			

Diameter (d)	Length (l)																														
	115	120	125	130	135	140	145	150	155	160	165	170	175	180	190	200	210	220	230	235	240	250	260	270	280	290	300	310	330	350	360
M2																															
M2.5																															
M3																															
M4																															
M5		●		●		●		●		●		●		●		●		●		●		●		●		●		●		●	
M6	●	●	●	●	●	●		●	●	●		●		●		●		●		●		●		●		●		●		●	
M8	●	●	●	●	●	●		●	●	●		●	●	●	●	●		●		●		●		●		●		●		●	
M10	●	●		●	●	●		●	●	●		●	●	●	●	●		●		●		●		●		●		●		●	
M12	●	●	●	●	●	●	●	●	●	●	●	●	●	●	●	●	●	●	●	●	●	●	●	●	●	●	●	●	●	●	●
M14		●		●		●		●		●		●		●		●		●		●		●		●		●		●		●	
M16		●	●	●		●		●		●		●	●	●	●	●	●	●	●	●	●	●	●	●	●	●	●	●	●	●	●
M18		●																													
M20		●		●		●		●		●		●	●	●	●	●	●	●	●	●	●	●	●	●	●	●	●	●	●	●	●
M24		●		●		●		●		●		●	●	●	●	●	●	●	●	●	●	●	●	●	●	●	●	●	●	●	●
M27		●		●		●		●		●		●	●	●	●	●	●	●	●	●	●	●	●	●	●	●	●	●	●	●	●
M30		●		●		●		●		●		●	●	●	●	●	●	●	●	●	●	●	●	●	●	●	●	●	●	●	●
M36		●		●		●		●		●		●	●	●	●	●	●	●	●	●	●	●	●	●	●	●	●	●	●	●	●
M42								●																							

● Combinations available in the eShop | Other sizes on request

All technical data refer to the measure mm

