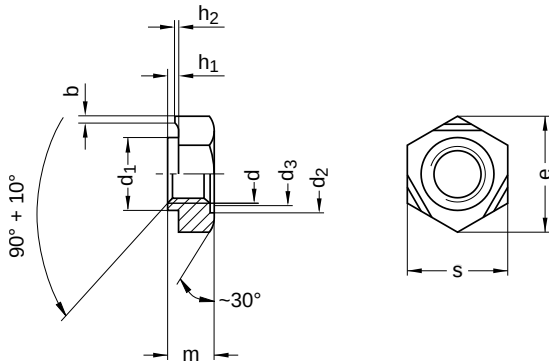


DIN 929
Hexagon weld nuts

Stainless steel A4 | Cr(VI)-free | Metric thread



Diameter (d)	nominal size	b		d ₁ nominal size	d ₂ nominal size	d ₃ min.	h ₁	
		min.	max.				min.	max.
M3	0.80	0.60	1.00	4.5	4.5	3.15	0.45	0.55
M4	0.80	0.60	1.00	6	6	4.20	0.55	0.65
M5	0.80	0.60	1.00	7	7	5.25	0.60	0.70
M6	0.90	0.68	1.12	8	8	6.30	0.60	0.75
M8	1.00	0.75	1.25	10.5	10.5	8.40	0.75	0.90
M10	1.25	0.95	1.55	12.5	12.5	10.50	0.95	1.15
M12	1.25	0.95	1.55	14.8	14.8	12.60	1.20	1.40
M16	1.50	1.10	1.90	18.8	18.8	16.80	1.60	1.80

Diameter (d)	max.	h ₂ min.	m nominal size	e min.	s nominal size	Pitch (P)	Tool size
M4	0.35	0.25	3.5	9.83	9.0	0.70	SW 9
M5	0.40	0.30	4.0	10.95	10.0	0.80	SW 10
M6	0.40	0.30	5.0	12.02	11.0	1.00	SW 11
M8	0.50	0.35	6.5	15.38	14.0	1.25	SW 14
M10	0.65	0.50	8.0	18.74	17.0	1.50	SW 17
M12	0.80	0.60	10.0	20.91	19.0	1.75	SW 19
M16	1.00	0.80	13.0	26.51	24.0	2.00	SW 24

All technical data refer to the measure mm

