

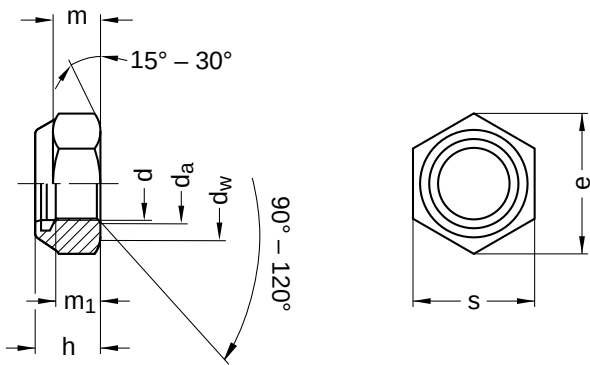
DIN 985 similar to ISO 10511

Hexagon nuts

With clamping part | non-metallic insert | low form

Steel 08 | zinc-plated | Cr(VI)-free | Metric fine thread

Further information: DIN standard has been withdrawn | changed nut height and wrench width



Diameter (d)	d _a		d _w	h		m ₁	e	m	s		Pitch (P)	Tool size
	min.	max.		min.	max.				min.	max.		
M8 x 1	8	8.75	11.6	7.64	8.0	4.4	14.38	5.5	12.73	13	1.00	SW 13
M10 x 1	10	10.80	15.6	9.64	10.0	5.5	18.90	6.5	16.73	17	1.00	SW 17
M10 x 1.25	10	10.80	15.6	9.64	10.0	5.5	18.90	6.5	16.73	17	1.25	SW 17
M12 x 1.25	12	13.00	17.4	11.57	12.0	6.6	21.10	8.0	18.67	19	1.25	SW 19
M12 x 1.5	12	13.00	17.4	11.57	12.0	6.6	21.10	8.0	18.67	19	1.50	SW 19
M14 x 1.5	14	15.10	20.5	13.30	14.0	7.7	24.49	9.5	21.67	22	1.50	SW 22
M16 x 1.5	16	17.30	22.5	15.30	16.0	8.8	26.75	10.5	23.67	24	1.50	SW 24
M18 x 1.5	18	19.50	24.9	17.66	18.5	9.9	29.56	13.0	26.16	27	1.50	SW 27
M20 x 1.5	20	21.60	27.7	18.70	20.0	11.0	32.95	14.0	29.16	30	1.50	SW 30
M20 x 2	20	21.60	27.7	18.70	20.0	11.0	32.95	14.0	29.16	30	2.00	SW 30
M22 x 1.5	22	23.70	29.5	20.70	22.0	12.2	35.03	15.0	31.00	32	1.50	SW 32
M24 x 1.5	24	25.90	33.2	22.70	24.0	13.2	39.55	15.0	35.00	36	1.50	SW 36
M24 x 2	24	25.90	33.2	22.70	24.0	13.2	39.55	15.0	35.00	36	2.00	SW 36
M27 x 2	27	29.10	38.0	25.70	27.0	14.8	45.20	17.0	40.00	41	2.00	SW 41
M30 x 1.5	30	32.40	42.7	28.70	30.0	16.5	50.85	19.0	45.00	46	1.50	SW 46
M30 x 2	30	32.40	42.7	28.70	30.0	16.5	50.85	19.0	45.00	46	2.00	SW 46
M36 x 3	36	38.90	51.1	34.40	36.0	19.8	60.79	25.0	53.80	55	3.00	SW 55

All technical data refer to the measure mm

