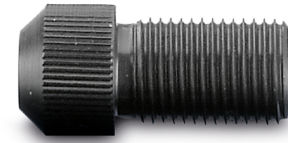


## RIVKLE® Nose piece

Spare anvil to set RIVKLE® blind rivet studs.

For setting tools RIVKLE® P2005, P1007, P2007 and B2007.

Technical information can be found on the last page.



Diameter (d)	Article number	For tool type
M 4	37611304030	P2005, P1007, P2007, B2007
M 5	37611305030	P2005, P1007, P2007, B2007
M 6	37611306030	P2005, P1007, P2007, B2007
M 8	37611308030	P2005, P1007, P2007, B2007

All technical data refer to the measure mm

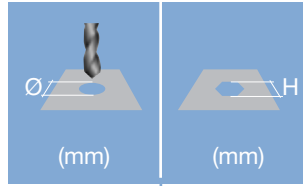




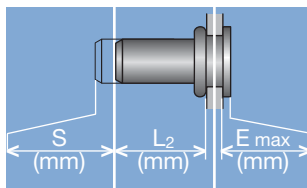
**Head diameter**  
**Overall length**  
**Thread size**



**Grip range**  
 Defines the range of total thickness of the customers part (even if it consists of more than one layer)



**Hole geometry**  
 If round → diameter  
 If hexagonal → width across flats

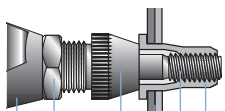


**Head projection after setting**  
 Variable according to the application (setting load, material substrate, etc.)

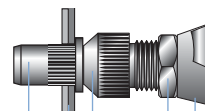
**Blind side projection after installation**  
 Defines the clearance needed on the blind side (cannot be used for quality control)

**Setting stroke**  
 Difference of total length before and after installation

**RIVKLE® Nut**



**RIVKLE® Stud**



- RIVKLE®
- Mandrel\*
- Customers part
- Anvil\*
- Counter nut
- Setting tool

\*in accordance to chosen RIVKLE®\*

All technical data refer to the measure mm

