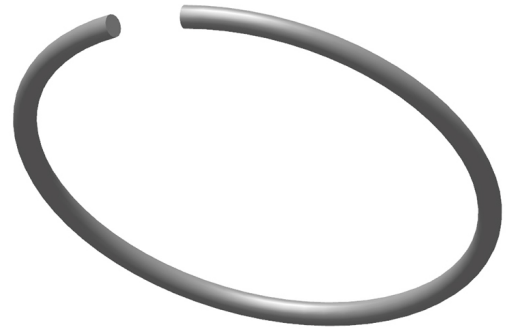


## RIVKLE® Ring

For the installation of the threaded mandrel on RIVKLE® setting tools P2005, P1007 and P2007.

The gap in this ring must be turned until the bolt is covered so that the bolt is easier to install.

Technical information can be found on the last page.



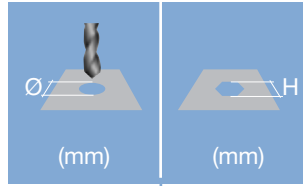
Article number	For tool type
23680300008	P2005, P1007, P2007



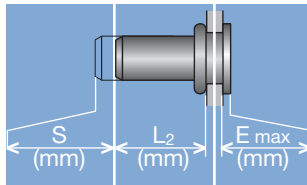
Head diameter  
Overall length  
Thread size



**Grip range**  
Defines the range of total thickness of the customers part (even if it consists of more than one layer)



**Hole geometry**  
If round → diameter  
If hexagonal → width across flats

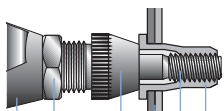


**Head projection after setting**  
Variable according to the application (setting load, material substrate, etc.)

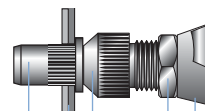
**Blind side projection after installation**  
Defines the clearance needed on the blind side (cannot be used for quality control)

**Setting stroke**  
Difference of total length before and after installation

**RIVKLE® Nut**



**RIVKLE® Stud**



- RIVKLE®
- Mandrel\*
- Customers part
- Anvil\*
- Counter nut
- Setting tool

\*in accordance to chosen RIVKLE®\*

All technical data refer to the measure mm

